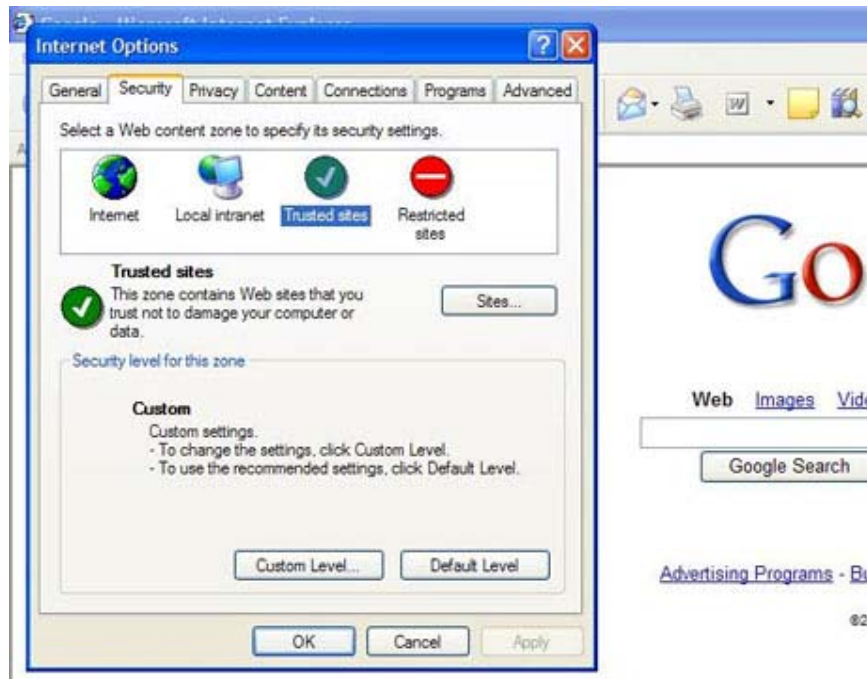
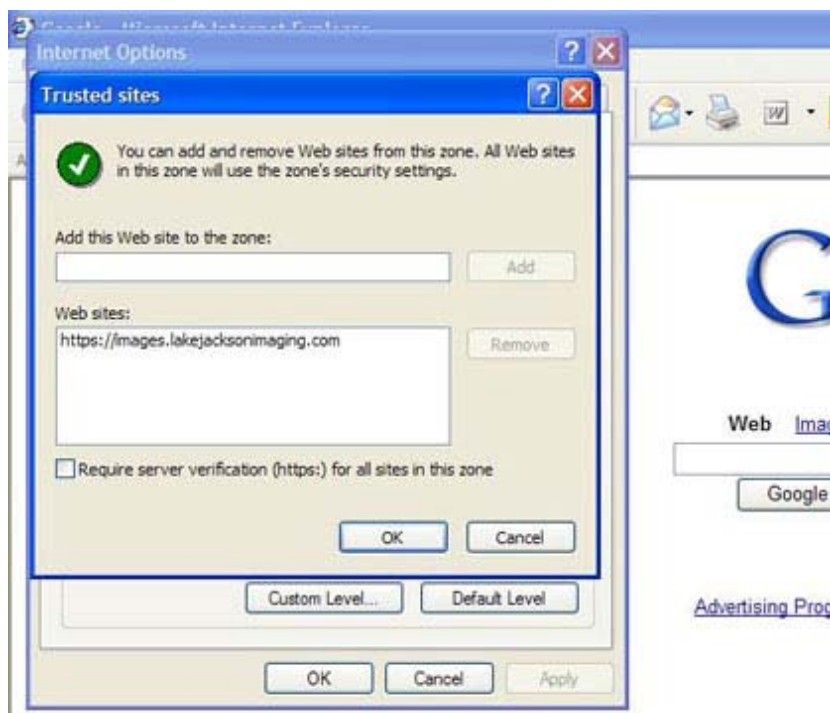


## Procedure to install Picom on a remote PC using Internet Explorer 6

Open up Internet Explorer and go to your Tool bar at the top left and select Tools > Internet Options > Security > Trusted Sites > Click on the Sites button below restricted sites



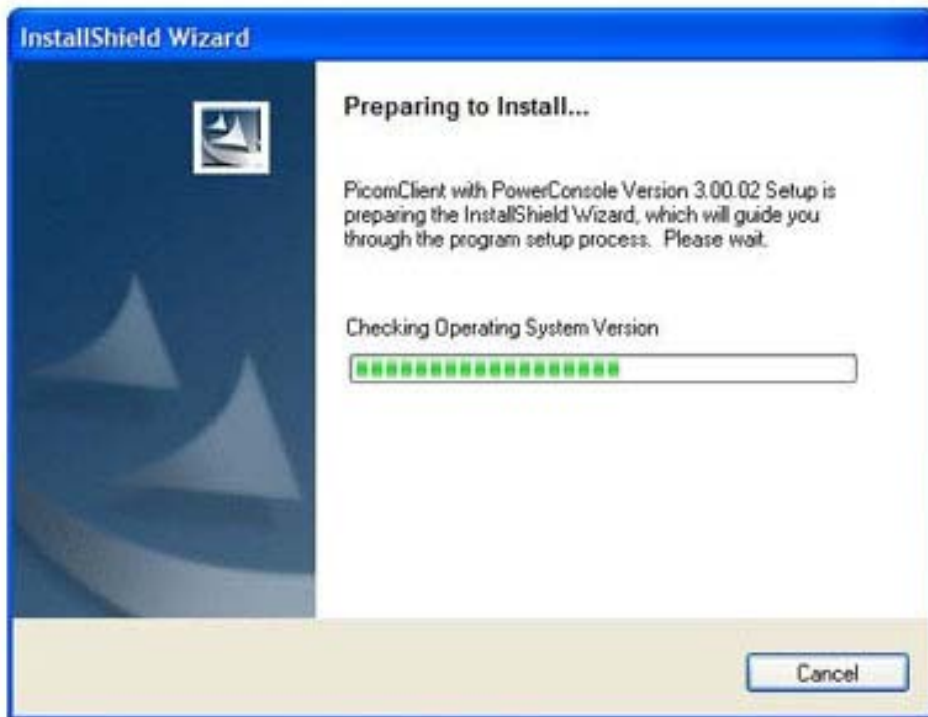
Add the line and right click copy:  
<https://images.lakejacksonimaging.com>



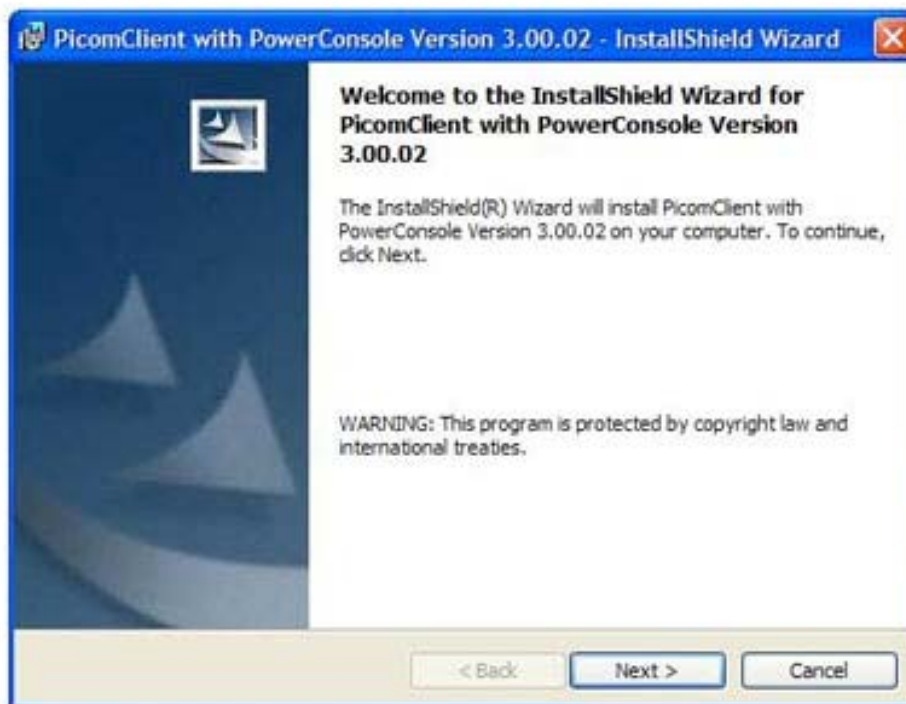
Select OK and Clear Address bar so you can Paste the web address:  
<https://images.lakejacksonimaging.com>  
Click Go and you will see this Login Page.

Type in your user id and password and check the box “Go to the Main Menu upon Sign In”

You will now be downloading the Picom Client software and there will be a 2 min pause. The download is about 40MB. When Complete, You will see the Installer Below.



Click Next.



You do not need to put anything in the User Name and Organization fields, Click Next.

**Customer Information**  
Please enter your information.

User Name:  
Steve Miller

Organization:

Install this application for:

Anyone who uses this computer (all users)  
 Only for me (Steve Miller)

InstallShield

< Back   Next >   Cancel

Click Install.

**Ready to Install the Program**  
The wizard is ready to begin installation.

If you want to review or change any of your installation settings, click Back. Click Cancel to exit the wizard.

Current Settings:

Setup Type:  
Typical

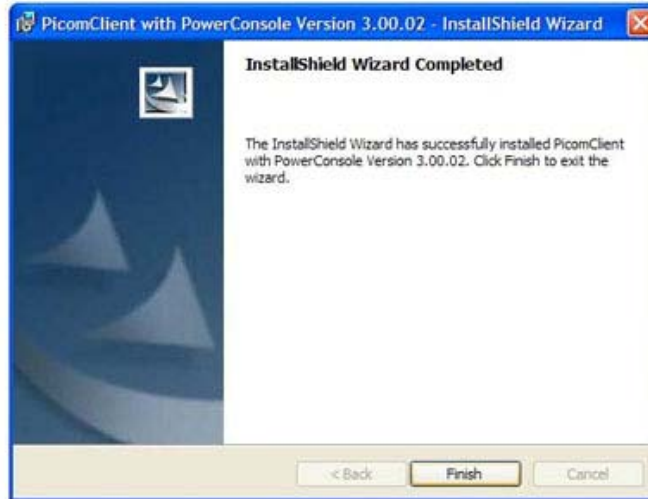
Destination Folder:  
C:\Program Files\Picom Viewer\

User Information:  
Name: Steve Miller  
Company:

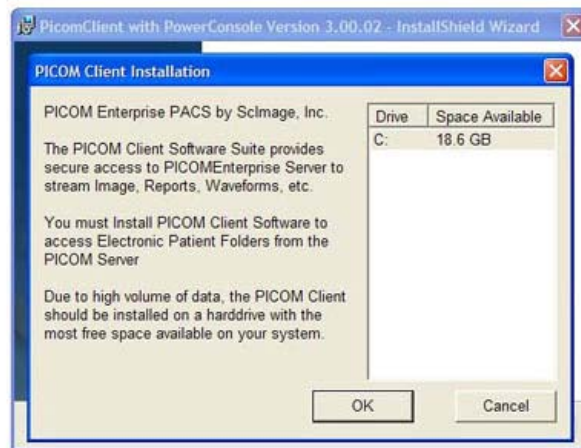
InstallShield

< Back   Install   Cancel

Click Finish.



Click OK.



Click OK.



Select Default Browser: Power Console and Click the Power Console button underneath.

The screenshot shows the PICOMEnterprise website. At the top left is the ScImage logo with the tagline "The Enterprise PACS Company". To the right, the page title "PICOMEnterprise" is displayed in a large, stylized font, followed by the subtitle "Your ForeverOnline(TM) Enterprise PACS and Telemedicine Solution". The main content area features a dark background with a glowing white network pattern on the left. Text on the right states: "PICOMEnterprise provides scalable Storage, Distribution and Presentation of data-intensive clinical objects." Below this is a list of links: "My Account", "Install PicomQR", "Install NetraMD", "Upgrade PViewXYT", "Radiology Reportware", "Install PicomEKG", "Re-Install Picom Client", "Install PicomCD", "Upgrade PViewXYT", "Cardiology Reportware", "Install Picom Voice", and "Log Off". A "Default Browser:" section has three radio buttons: "PowerConsole" (selected), "Classic Browser", and "Interactive". At the bottom of this section are two buttons: "Power Console" and "Classic Browser". The footer contains the ScImage logo, contact information, and copyright notice: "Copyright © ScImage, Inc. - All Rights Reserved • Powered by ScImage, Inc."

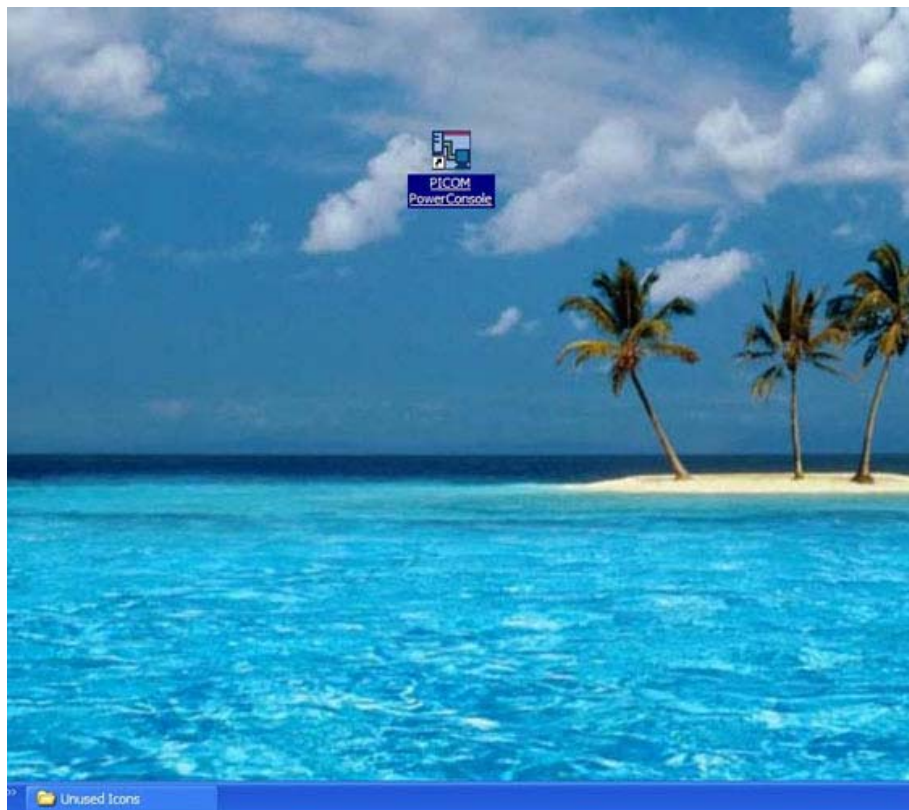
Click Yes.

This screenshot is identical to the previous one, but with a "Windows Internet Explorer" dialog box overlaid in the center. The dialog box has a blue title bar and a question mark icon. The text inside reads: "The webpage you are viewing is trying to close the window. Do you want to close this window?" with "Yes" and "No" buttons. The "Yes" button is highlighted with a yellow border. The rest of the website content, including the navigation links and browser selection, remains visible behind the dialog box.

You will now see the Power Console Login and have a default setting.  
Click Save.  
Login by typing your password.



Logout of the Power Console and Find your new Power Console icon Located on your Desktop.



**Double Click the Power Console Icon to Login.**  
**If your information disappears from the login window, here is what you should type:**

**Description Field: <Your Name>**

**Host Field: 70.255.138.83**

**Port Field: 796**

**Login Field: <Your Account ID or User ID>**

**Click Save. You should see <Your Name> move under the Server Description Field.**

**Type in your Password and Click Login.**

**Make sure you have the most recent Adobe Reader, and update it by:**

**Open Adobe Acrobat, Select Help from the top of the tool bar.**

**Click on Check for Updates now.**

